

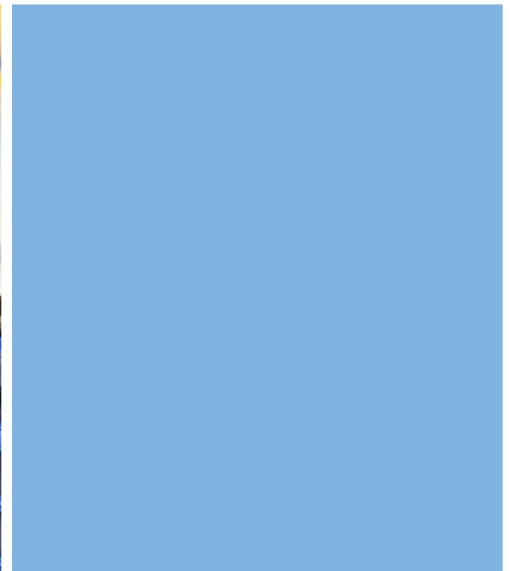
Buena Vista School District

21660 Road 60 Tulare, CA 93274 ▪ (559) 686-2015 ▪ www.buenavistaeagles.org

SARC

2022-23

School Accountability
Report Card
Published in 2023-24



Buena Vista Elementary School

Grades K-8
CDS Code 54-71829-6053862

Carole Mederos, Superintendent/Principal
cmederos@buenavistaeagles.org

21660 Road 60
Tulare, CA 93274
(559) 686-2015

www.buenavistaeagles.org



Principal's Message

Buena Vista Elementary School is a little country school about seven miles west of Tulare. We strive to maintain a caring and safe academic environment. Many of our students come from outside our district boundaries to attend Buena Vista. Approximately 70% of our 191 students come from outside of our district boundaries. Many families decide to bring their children to Buena Vista because they feel that they were not being challenged to their potential, they may be at risk or below grade level. Some parents just want a small family atmosphere. Whatever the reason, our students' individual needs are met by a competent and caring staff.

Buena Vista has a diverse population: Diversity is not an obstacle, but an asset. Our students have learned tolerance and social leadership. Our students are successful in local competitions, such as the Tulare Rural Schools' Spelling Bee, Scripps Spelling Bee and the Tulare County Office of Education Math Super Bowl, art displays and Reading Revolution. Our band students also participate in local band reviews.

Buena Vista students are very successful in high school because of their academic strength and positive approach toward any challenge they may encounter. Their Buena Vista experience has instilled leadership qualities that have allowed our students to assume leadership roles in high school and college.

Buena Vista continues to make students' social-emotional well-being our focus. The COVID-19 Pandemic has brought many challenges to education, but the families' social-emotional connection to the school staff and student peers was a noticeable challenge. We continue to work to create an environment where 100% of our families feel welcome on campus and feel that their participation is important and appreciated.

We also have implemented intervention opportunities for students in the areas of language arts and math. We hope to gain momentum and erase learning loss.

We continue to focus on writing skills through the implementation of a new writing program. We continue to train staff and implement new instructional strategies. We have also increased access to reading intervention through staff training and the purchase of leveled books.

Buena Vista is a great little school where the individual needs of students are part of the curriculum planning and implementation. The entire staff is considered important to education. We do our best to educate the whole student—mentally, physically and emotionally.

School Mission Statement

Buena Vista Elementary School is devoted to developing a well-rounded student. We provide a supportive, educational environment in a small-school setting. Our family community encourages confident, focused and motivated learners.

Parental Involvement

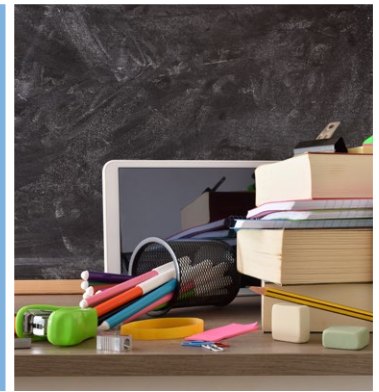
Buena Vista parents are very involved in their children's education. The most impressive evidence is that so many parents choose to bring their children to Buena Vista from outside the district. They have already shown that they are willing to go the extra mile—literally. Our parents have a strong and active Parents Club. You will see parents on campus daily volunteering in one capacity or another. We encourage our parents to take an active role in their child's education.

Buena Vista's parents have many avenues of support. Their strong involvement provides our students with many activities to enhance their academic environment. Assemblies, field trips, the Book Faire and a Halloween Carnival are a few examples that are provided by our Parents Club. Our School Site Council has been supportive of our classroom instructional programs by allocating funds for instructional aides and quality instructional materials. Buena Vista parents also participate as classroom volunteers and room parents for each class. Almost any parent we ask to participate is ready and willing to do whatever is needed.

For more information on how to become involved, please contact Parents Club representative Shawna Hyles at (559) 686-2015.

School Safety

Buena Vista maintains a well-kept and safe environment for our students. Buena Vista maintains an up-to-date and complete safety plan that is housed in the school office and each classroom. Each classroom maintains a quick-reference guide with key points covered for easy access. The plan is reviewed annually with the faculty. The plan covers a wide range of emergencies; earthquake and fire safety are covered as well as intruders and toxic leaks or spills. The school safety plan was last reviewed and updated in October 2023.



School Accountability Report Card

In accordance with state and federal requirements, the School Accountability Report Card (SARC) is put forth annually by all public schools as a tool for parents and interested parties to stay informed of the school's progress, test scores and achievements.

Governing Board

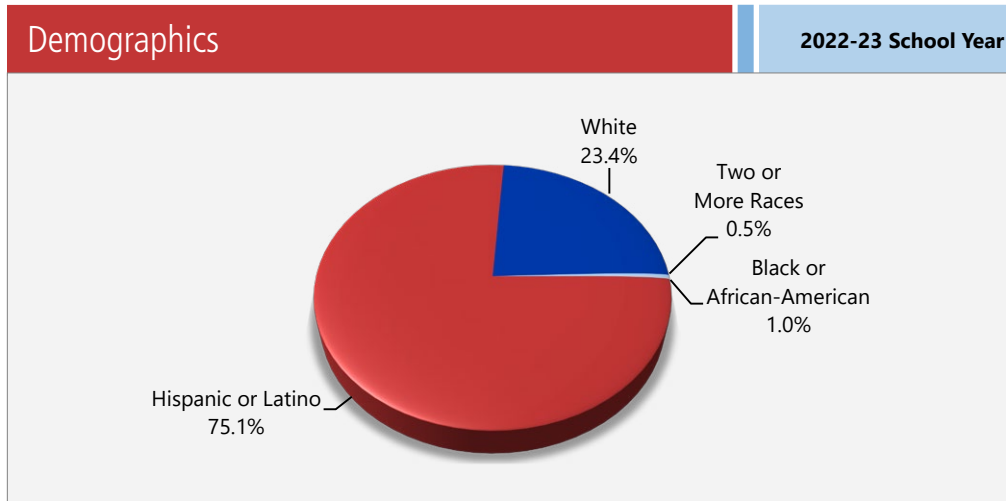
- Dave F. Martin
- Joe Souza
- Mario Simoes, Jr.





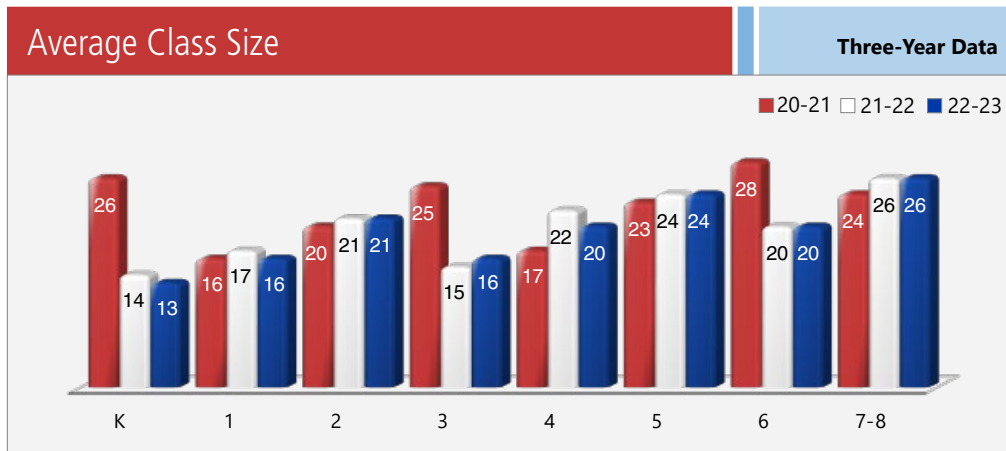
Enrollment by Student Group

The total enrollment at the school was 197 students for the 2022-23 school year. The pie chart displays the percentage of students enrolled in each group.



Class Size Distribution

The bar graph displays the three-year data for average class size, and the table displays the three-year data for the number of classrooms by size. The number of classes indicates how many classrooms fall into each size category (a range of total students per classroom). At the secondary school level, this information is reported by subject area rather than grade level.



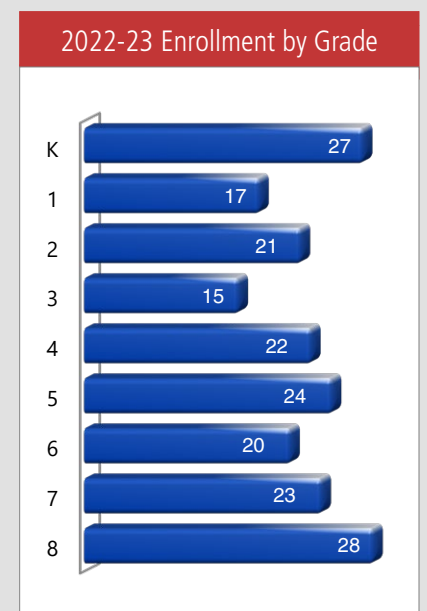
Grade	2020-21			2021-22			2022-23		
	Number of Students								
	1-20	21-32	33+	1-20	21-32	33+	1-20	21-32	33+
K		1		2			2		
1	1			1			1		
2	1				1			1	
3		1		1			1		
4	1				1		1		
5		1			1			1	
6		1			1		1		
7-8		2		2			2		

Enrollment by Student Group

Female	45.20%
Male	54.80%
Non-Binary	0.00%
English learners	18.80%
Foster youth	0.00%
Homeless	0.00%
Migrant	0.00%
Socioeconomically Disadvantaged	73.10%
Students with Disabilities	7.10%

Enrollment by Grade

The bar graph displays the total number of students enrolled in each grade for the 2022-23 school year.





Suspensions and Expulsions

This table shows the school, district, and state suspension and expulsion rates collected between July through June, each full school year respectively. Note: Students are only counted one time, regardless of the number of suspensions.

Suspensions and Expulsions							Three-Year Data		
	Buena Vista ES			Buena Vista SD			California		
	20-21	21-22	22-23	20-21	21-22	22-23	20-21	21-22	22-23
Suspension rates	0.00%	2.50%	2.00%	0.00%	2.50%	2.00%	0.20%	3.20%	3.60%
Expulsion rates	0.00%	0.00%	0.00%	0.00%	0.00%	0.00%	0.00%	0.10%	0.10%

Note: Data collected during the 2020–21 school year may not be comparable to later years of this collection due to differences in learning mode instruction in response to the COVID-19 pandemic.

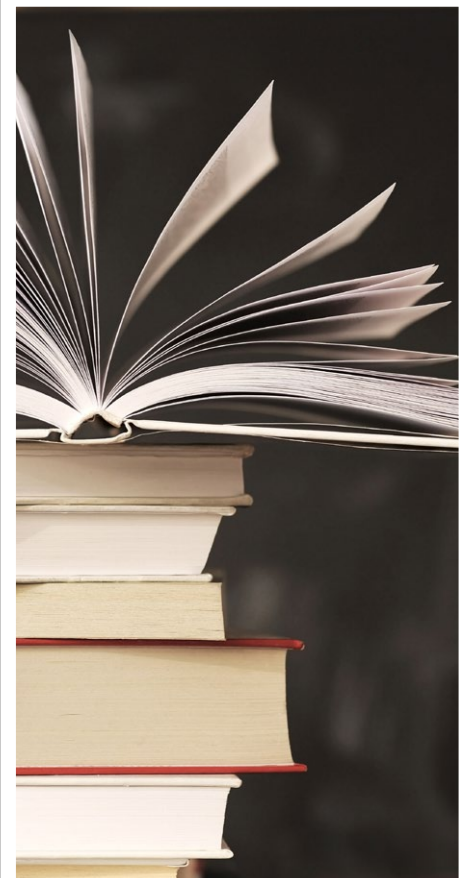
Suspensions and Expulsions by Student Group

Suspensions and Expulsions by Student Group		2022-23 School Year	
Student Group	Suspensions Rate	Expulsions Rate	
All Students	2.00%	0.00%	
Female	1.10%	0.00%	
Male	2.70%	0.00%	
Non-Binary	0.00%	0.00%	
American Indian or Alaska Native	0.00%	0.00%	
Asian	0.00%	0.00%	
Black or African American	0.00%	0.00%	
Filipino	0.00%	0.00%	
Hispanic or Latino	2.70%	0.00%	
Native Hawaiian or Pacific Islander	0.00%	0.00%	
Two or More Races	0.00%	0.00%	
White	0.00%	0.00%	
English Learners	2.60%	0.00%	
Foster Youth	0.00%	0.00%	
Homeless	0.00%	0.00%	
Socioeconomically Disadvantaged	2.70%	0.00%	
Students Receiving Migrant Education Services	0.00%	0.00%	
Students with Disabilities	0.00%	0.00%	

Professional Development

Professional Development Days	
Number of school days dedicated to staff development and continuous improvement	
2021-22	5
2022-23	4
2023-24	4

"We do our best to educate the whole student—mentally, physically and emotionally."





California Physical Fitness Test

Each spring, all students in grades 5, 7 and 9 are required to participate in the California Physical Fitness Test (PFT). The Fitnessgram is the designated PFT for students in California public schools put forth by the State Board of Education. Due to changes to the 2021–22 and 2022–23 PFT administration, only participation results are required for the five fitness areas.

Encouraging and assisting students in establishing lifelong habits of regular physical activity is the primary goal of the Fitnessgram. The table shows the percentage of students participating in each of the five fitness components for the most recent testing period. For more detailed information on the California PFT, please visit www.cde.ca.gov/ta/tg/pf.

California Physical Fitness Test					2022-23 School Year
Percentage of Students Participating In Each Of The Five Fitness Components					
Grade	Component 1:	Component 2:	Component 3:	Component 4:	Component 5:
	Aerobic Capacity	Abdominal Strength and Endurance	Trunk Extensor and Strength and Flexibility	Upper Body Strength and Endurance	Flexibility
5	92%	92%	96%	92%	100%
7	91%	91%	100%	96%	100%

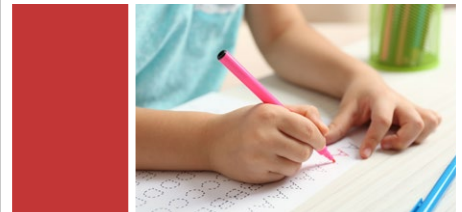
Chronic Absenteeism by Student Group

Chronic Absenteeism by Student Group				2022-23 School Year
Student Group	Cumulative Enrollment	Chronic Absenteeism Eligible Enrollment	Chronic Absenteeism Count	Chronic Absenteeism Rate
All Students	202	202	49	24.30%
Female	92	92	16	17.40%
Male	110	110	33	30.00%
Non-Binary	0	0	0	0.00%
American Indian or Alaska Native	0	0	0	0.00%
Asian	0	0	0	0.00%
Black or African American	2	2	0	0.00%
Filipino	0	0	0	0.00%
Hispanic or Latino	150	150	39	26.00%
Native Hawaiian or Pacific Islander	0	0	0	0.00%
Two or More Races	1	1	0	0.00%
White	49	49	10	20.40%
English Learners	38	38	8	21.10%
Foster Youth	0	0	0	0.00%
Homeless	0	0	0	0.00%
Socioeconomically Disadvantaged	149	149	35	23.50%
Students Receiving Migrant Education Services	0	0	0	0.00%
Students with Disabilities	21	21	6	28.60%

Types of Services Funded

These programs and services are provided at the school either through categorical funds or other sources that support and assist students:

- Title I
- Title II
- Title III
- Title VI
- Supplemental/Concentration Funds
- Class-size Reduction
- State Lottery and State Lottery Instructional Materials
- Education Protection Account
- Extended Learning After-school Program (HEART)
- Instructional Aides
- Curriculum Coaches
- Rural Education Achievement Program (REAP)



California School Dashboard

The California School Dashboard (Dashboard) <https://www.caschooldashboard.org/> reflects California's new accountability and continuous improvement system and provides information about how LEAs and schools are meeting the needs of California's diverse student population. The Dashboard contains reports that display the performance of LEAs, schools, and student groups on a set of state and local measures to assist in identifying strengths, challenges, and areas in need of improvement.

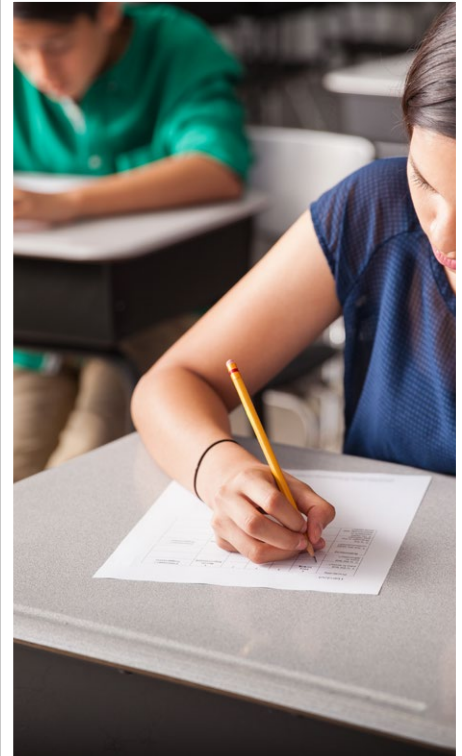


Statewide Assessments

Statewide assessments (i.e., California Assessment of Student Performance and Progress [CAASPP] System includes the Smarter Balanced Summative Assessments for students in the general education population and the California Alternate Assessments [CAAs] for English language arts/literacy [ELA] and mathematics given in grades three through eight and grade eleven. Only eligible students may participate in the administration of the CAAs. CAAs items are aligned with alternate achievement standards, which are linked with the Common Core State Standards [CCSS] for students with the most significant cognitive disabilities).

The CAASPP System encompasses the following assessments and student participation requirements:

- Smarter Balanced Summative Assessments and CAAs for ELA** in grades three through eight and grade eleven.
- Smarter Balanced Summative Assessments and CAAs for mathematics** in grades three through eight and grade eleven.
- California Science Test (CAST) and CAAs for Science** in grades five, eight, and once in high school (i.e., grade 10, 11 or 12).



CAASPP Test Results in Science for All Students

The table below shows the percent of students meeting or exceeding the State standard on the CAASPP—California Science Test (CAST) and the California Alternate Assessment for Science (CAA for Science) for grades 5, 8 and once in high school (i.e., grade 10, 11 or 12).

Percentage of Students Meeting or Exceeding State Standard					Two-Year Data	
Subject	Buena Vista ES		Buena Vista SD		California	
	21-22	22-23	21-22	22-23	21-22	22-23
Science	29.55%	21.57%	29.55%	21.57%	29.47%	30.29%

CAASPP Test Results in ELA and Mathematics for All Students

The table below shows the percent of students meeting or exceeding the State standards on the California Assessment of Student Performance and Progress (CAASPP) Smarter Balanced Summative Assessments and California Alternate Assessments (CAAs) for English language arts/literacy (ELA) and mathematics for grades 3-8 and 11.

Percentage of Students Meeting or Exceeding State Standard					Two-Year Data	
Subject	Buena Vista ES		Buena Vista SD		California	
	21-22	22-23	21-22	22-23	21-22	22-23
English language arts/literacy	38%	40%	38%	40%	47%	46%
Mathematics	26%	28%	26%	28%	33%	34%

CAASPP by Student Group: Science, English Language Arts and Mathematics

The tables on the following pages display the percentage of students that met or exceeded state standards in science, English language arts/literacy and mathematics for the school by student groups.

The "percentage met or exceeded" is calculated by taking the total number of students who met or exceeded the standard on the Smarter Balanced Summative Assessment plus the total number of students who met the standard on the CAA divided by the total number of students who participated in both assessments.

Note: The number of students tested includes all students who participated in the test whether they received a score or not. However, the number of students tested is not the number that was used to calculate the achievement level percentages. The achievement level percentages are calculated using only students who received scores.



CAASPP Test Results by Student Group: Science (grades 5 and 8)

Percentage of Students Meeting or Exceeding State Standard					2022-23 School Year
Science					
Group	Total Enrollment	Number Tested	Percentage Tested	Percentage Not Tested	Percentage Met or Exceeded
All students	52	52	100.00%	0.00%	21.57%
Female	21	21	100.00%	0.00%	28.57%
Male	31	31	100.00%	0.00%	19.35%
American Indian or Alaska Native	❖	❖	❖	❖	❖
Asian	❖	❖	❖	❖	❖
Black or African American	❖	❖	❖	❖	❖
Filipino	❖	❖	❖	❖	❖
Hispanic or Latino	39	39	100.00%	0.00%	20.51%
Native Hawaiian or Pacific Islander	❖	❖	❖	❖	❖
Two or more races	❖	❖	❖	❖	❖
White	11	11	100.00%	0.00%	36.36%
English Learners	❖	❖	❖	❖	❖
Foster Youth	❖	❖	❖	❖	❖
Homeless	❖	❖	❖	❖	❖
Military	❖	❖	❖	❖	❖
Socioeconomically disadvantaged	37	37	100.00%	0.00%	18.92%
Students receiving Migrant Education services	❖	❖	❖	❖	❖
Students with Disabilities	❖	❖	❖	❖	❖

❖ Scores are not shown when the number of students tested is ten or less, either because the number of students in this category is too small for statistical accuracy or to protect student privacy.





CAASPP Test Results by Student Group: English Language Arts (grades 3-8)

Percentage of Students Meeting or Exceeding State Standard					2022-23 School Year
English Language Arts					
Group	Total Enrollment	Number Tested	Percentage Tested	Percentage Not Tested	Percentage Met or Exceeded
All students	133	133	100.00%	0.00%	39.85%
Female	63	63	100.00%	0.00%	49.21%
Male	70	70	100.00%	0.00%	31.43%
American Indian or Alaska Native	❖	❖	❖	❖	❖
Asian	❖	❖	❖	❖	❖
Black or African American	❖	❖	❖	❖	❖
Filipino	❖	❖	❖	❖	❖
Hispanic or Latino	97	97	100.00%	0.00%	34.02%
Native Hawaiian or Pacific Islander	❖	❖	❖	❖	❖
Two or more races	❖	❖	❖	❖	❖
White	33	33	100.00%	0.00%	60.61%
English Learners	20	20	100.00%	0.00%	20.00%
Foster Youth	❖	❖	❖	❖	❖
Homeless	❖	❖	❖	❖	❖
Military	❖	❖	❖	❖	❖
Socioeconomically disadvantaged	95	95	100.00%	0.00%	34.74%
Students receiving Migrant Education services	❖	❖	❖	❖	❖
Students with Disabilities	16	16	100.00%	0.00%	31.25%

❖ Scores are not shown when the number of students tested is ten or less, either because the number of students in this category is too small for statistical accuracy or to protect student privacy.

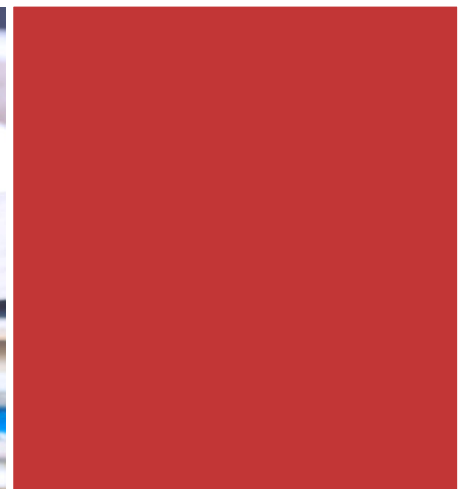




CAASPP Test Results by Student Group: Mathematics (grades 3-8)

Percentage of Students Meeting or Exceeding State Standard					2022-23 School Year
Mathematics					
Group	Total Enrollment	Number Tested	Percentage Tested	Percentage Not Tested	Percentage Met or Exceeded
All students	133	133	100.00%	0.00%	27.82%
Female	63	63	100.00%	0.00%	30.16%
Male	70	70	100.00%	0.00%	25.71%
American Indian or Alaska Native	❖	❖	❖	❖	❖
Asian	❖	❖	❖	❖	❖
Black or African American	❖	❖	❖	❖	❖
Filipino	❖	❖	❖	❖	❖
Hispanic or Latino	97	97	100.00%	0.00%	22.68%
Native Hawaiian or Pacific Islander	❖	❖	❖	❖	❖
Two or more races	❖	❖	❖	❖	❖
White	33	33	100.00%	0.00%	45.45%
English Learners	20	20	100.00%	0.00%	20.00%
Foster Youth	❖	❖	❖	❖	❖
Homeless	❖	❖	❖	❖	❖
Military	❖	❖	❖	❖	❖
Socioeconomically disadvantaged	95	95	100.00%	0.00%	24.21%
Students receiving Migrant Education services	❖	❖	❖	❖	❖
Students with Disabilities	16	16	100.00%	0.00%	18.75%

❖ Scores are not shown when the number of students tested is ten or less, either because the number of students in this category is too small for statistical accuracy or to protect student privacy.





Textbooks and Instructional Materials

Every Buena Vista student has access to his or her own quality textbooks. Textbooks have been purchased based on state-adoption cycles. The state has adopted new Common Core State Standards. We have adopted the state-approved Houghton Mifflin math series Go Math!, the McGraw-Hill Wonders English language arts program for grades K-6 and the Collections Program for grades 7-8. We continue to evaluate new materials and use materials that support Common Core standards.

During the textbook-selection process, potential publisher samples are reviewed and voted on by the entire teaching staff. Samples are made available for the perusal of the School Site Council and Parents Club.

Buena Vista integrates visual and performing arts across the curriculum. Art projects, public speaking and drama are used as tools to enhance teaching and learning. Students have the opportunity to perform in poetry readings, holiday programs and the annual talent show. Students also travel to local concerts and dramatic productions.

Buena Vista maintains a strong music program in which all K-4 students participate. Grade 5-8 students can choose to participate in the band, which is led by our highly qualified music instructor, Scott Horton. The band performs publicly at least six times a year.

We are excited with the expanded opportunities we are offering our students and plan to increase their exposure to the arts.

Textbooks and Instructional Materials List		2023-24 School Year
Subject	Textbook	Adopted
Reading/language arts	Wonders, McGraw-Hill (K-6)	2016
Reading/language arts	Collections, Houghton Mifflin (6-8)	2022
Mathematics	Go Math!, Houghton Mifflin (K-8)	2015
Science	California Science, Macmillan/McGraw-Hill (6-8)	2008
History/social science	Social Science for California, Scott Foresman (K-5); Studies Weekly	2007
History/social science	Discovering Our Past, Glencoe (6-8); Studies Weekly	2007

Quality of Textbooks

The following table outlines the criteria required for choosing textbooks and instructional materials.

Quality of Textbooks		2023-24 School Year
Criteria	Yes/No	
Are the textbooks adopted from the most recent state-approved or local governing-board-approved list?	Yes/No*	
* Science and social studies textbooks are from the previous adoption. Working on science for adoption in the 2024-25 school year.		

Public Internet Access

Internet access is available at public libraries and other locations that are publicly accessible (e.g., the California State Library). Access to the Internet at libraries and public locations is generally provided on a first-come, first-served basis. Other use restrictions may include the hours of operation, the length of time that a workstation may be used (depending on availability), the types of software programs available on a workstation, and the ability to print documents.

◇ Not applicable.

Availability of Textbooks and Instructional Materials

The following lists the percentage of pupils who lack their own assigned textbooks and instructional materials.

Percentage of Students Lacking Materials by Subject	
2023-24 School Year	
Reading/language arts	0%
Mathematics	0%
Science	0%
History/social science	0%
Visual and performing arts	◇
Foreign language	◇
Health	◇

Currency of Textbooks

This table displays the date when the most recent hearing was held to adopt a resolution on the sufficiency of instructional materials.

Currency of Textbooks	
2023-24 School Year	
Data collection date	9/6/2023





School Facility Good Repair Status

The table shows the results of the school’s most recent inspection using the Facility Inspection Tool (FIT) or equivalent school form. This inspection determines the school facility’s good repair status using ratings of good condition, fair condition or poor condition. The overall summary of facility conditions uses ratings of exemplary, good, fair or poor.

School Facility Good Repair Status		2023-24 School Year
Items Inspected	Repair Status	
Systems: Gas leaks, sewer, mechanical systems (heating, ventilation and HVAC)	Good	
Interior: Interior surfaces (floors, ceilings, walls and window casings)	Good	
Cleanliness: Pest/vermin control, overall cleanliness	Good	
Electrical: Electrical systems	Good	
Restrooms/fountains: Restrooms, sinks and drinking fountains	Good	
Safety: Fire safety, emergency systems, hazardous materials	Good	
Structural: Structural condition, roofs	Good	
External: Windows/doors/gates/fences, playgrounds/school grounds	Good	
Overall summary of facility conditions	Exemplary	
Date of the most recent FIT report	9/7/2023	

Deficiencies and Repairs

The table lists the repairs required for all deficiencies found during the site inspection. Regardless of each item’s repair status, all deficiencies are listed.

Deficiencies and Repairs		2023-24 School Year
Items Inspected	Deficiencies and Action Taken or Planned	Date of Action
External	Painting of the entire school planned. Replacement of aging play structure planned.	Painting: 2024-25 school year Play structure: spring 2024

School Facilities

Buena Vista is one of the oldest Tulare County schools. It was founded in 1878. Part of our current facility was built in 1952. Modernization brought improvements to classrooms in 1996. Three relocatable classrooms were also brought to our campus. In 2000, a new wing was built, adding a kindergarten, a first-grade classroom and a computer lab/library. New construction in 2003 doubled the size of the cafeteria. A new office was also constructed at that time. In 2012-13, another new wing was added, giving grades 7-8 modern classrooms. All facilities are monitored regularly and kept clean and in good repair.

Buena Vista staff works diligently to create a safe and caring environment for our students. The school offers student supervision from 7:30 a.m. to 5:30 p.m. We maintain an environment conducive to learning. Classrooms are kept clean and comfortable. Class sizes are kept at a reasonable number to avoid overcrowding.

The Buena Vista staff takes pride in the facility. It is kept clean and in working order. Heaters and coolers are serviced regularly. Buena Vista employs a cleaning service that thoroughly cleans all classrooms three times per week. Restrooms are cleaned and restocked daily, with deep cleaning three times per week; our custodian provides this service.

Continued on sidebar

School Facilities

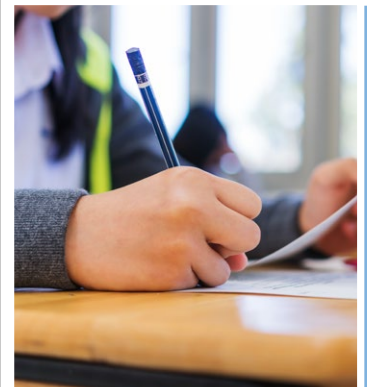
Continued from left

One-hundred percent of bathroom facilities are in working order. A part-time maintenance person takes care of any needed repairs. These repairs are taken care of within two days of being reported, unless extenuating circumstances exist.

A part-time gardener takes care of the school grounds, keeping it looking neat. The supervising staff and administration monitor playground equipment daily. Any needed repairs are made quickly and completely to keep students safe. If circumstances require, the unsafe area is marked and student access is limited.

All buildings are accessible for individuals who have disabilities. All classrooms and the office have internet access. The grounds are well maintained and clean. The janitorial staff is available both during and after school hours. Grounds are inspected regularly to keep facilities, students, staff and visitors safe.

Plans for future Buena Vista growth and improvements are underway. Applications for funding have been submitted to the state for both new classrooms and land acquisition. A new domestic well and blending facility came into operation in February 2016. We now can provide safe drinking water to our students, staff and visitors to our campus.





Teacher Preparation and Placement

The teacher data displayed in this SARC is from the 2020-21 and the 2021-22 school years. The teacher data for the 2022-23 SARC will not be available prior to February 1, 2024, and therefore is not included. These tables display the number and percent of teacher authorization/assignment as well as the total number and percent of teaching positions at the school, district and state levels. For questions concerning the assignment of teachers outside their subject area of competence or the credential status of teachers, visit the California Commission on Teacher Credentialing website at <https://www.ctc.ca.gov/>.

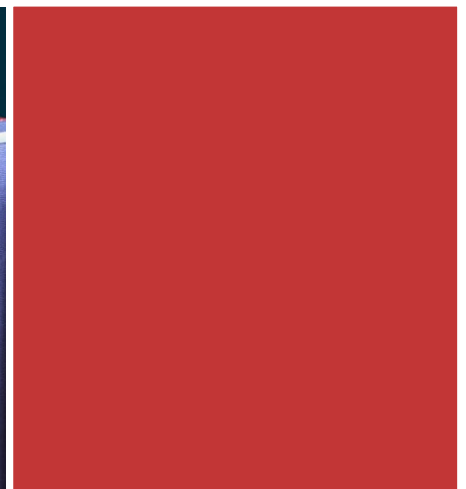
Teacher Preparation and Placement					2020-21 School Year	
Authorization/Assignment	School Number	School Percent	District Number	District Percent	State Number	State Percent
Fully (Preliminary or Clear) Credentialed for Subject and Student Placement (properly assigned)	10.0	100.0%	10.0	100.0%	228,366.1	83.1%
Intern Credential Holders Properly Assigned	0.0	0.0%	0.0	0.0%	4,205.9	1.5%
Teachers Without Credentials and Misassignments ("ineffective" under ESSA)	0.0	0.0%	0.0	0.0%	11,216.7	4.1%
Credentialed Teachers Assigned Out-of-Field ("out-of-field" under ESSA)	0.0	0.0%	0.0	0.0%	12,115.8	4.4%
Unknown	0.0	0.0%	0.0	0.0%	18,854.3	6.9%
Total Teaching Positions	10.0	100.0%	10.0	100.0%	274,759.1	100.0%

Teacher Preparation and Placement					2021-22 School Year	
Authorization/Assignment	School Number	School Percent	District Number	District Percent	State Number	State Percent
Fully (Preliminary or Clear) Credentialed for Subject and Student Placement (properly assigned)	10.0	100.0%	10.0	100.0%	234,405.2	84.0%
Intern Credential Holders Properly Assigned	0.0	0.0%	0.0	0.0%	4,853.0	1.7%
Teachers Without Credentials and Misassignments ("ineffective" under ESSA)	0.0	0.0%	0.0	0.0%	12,001.5	4.3%
Credentialed Teachers Assigned Out-of-Field ("out-of-field" under ESSA)	0.0	0.0%	0.0	0.0%	11,953.1	4.3%
Unknown	0.0	0.0%	0.0	0.0%	15,831.9	5.7%
Total Teaching Positions	10.0	100.0%	10.0	100.0%	279,044.8	100.0%

Note: The data in these tables is based on Full Time Equivalent (FTE) status. One FTE equals one staff member working full time; one FTE could also represent two staff members who each work 50 percent of full time. Additionally, an assignment is defined as a position that an educator is assigned to based on setting, subject, and grade level. An authorization is defined as the services that an educator is authorized to provide to students.

The data source is the California State Assignment Accountability System (CalSAAS) provided by the Commission on Teacher Credentialing. For information on the CalSAAS, visit the CALPADS web page at <https://www.cde.ca.gov/ds/sp/cl/calpadsupdfdash201.asp>.

For more information on the definitions listed above, refer to the Updated Teacher Equity Definitions web page at <https://www.cde.ca.gov/pd/ee/teacherequitydefinitions.asp>.





Teachers Without Credentials and Misassignments (considered "ineffective" under ESSA)

This table displays the number of authorization/assignments of teachers as well as the total number of teachers without credentials and misassignments at the school level. For questions concerning the permits, waivers, and misassignment of teachers, visit the California Commission on Teacher Credentialing website at <https://www.ctc.ca.gov/>.

Teachers Without Credentials and Misassignments	Two-Year Data	
	2020-21	2021-22
Authorization/Assignment		
Permits and Waivers	0.0	0.0
Misassignments	0.0	0.0
Vacant Positions	0.0	0.0
Total Teachers Without Credentials and Misassignments	0.0	0.0

Credentialed Teachers Assigned Out-of-Field (considered "out-of-field" under ESSA)

This table displays the number of teachers and the total out-of-field teachers at the school level.

For more information on the definitions listed above, refer to the California Commission on Teacher Credentialing's Administrator's Assignment Manual at <https://www.ctc.ca.gov/credentials/manuals>.

Credentialed Teachers Assigned Out-of-Field	Two-Year Data	
	2020-21	2021-22
Indicator		
Credentialed Teachers Authorized on a Permit or Waiver	0.0	0.0
Local Assignment Options	0.0	0.0
Total Out-of-Field Teachers	0.0	0.0

Class Assignments

This table displays the number of teachers and the total out-of-field teachers at the school level.

Misassignment and vacant teacher position data should be available in the district's personnel office.

Class Assignments	Two-Year Data	
	2020-21	2021-22
Indicator		
Misassignments for English Learners (a percentage of all the classes with English learners taught by teachers that are misassigned)	0.0%	0.0%
No credential, permit or authorization to teach (a percentage of all the classes taught by teachers with no record of an authorization to teach)	0.0%	0.0%

The data source is the California State Assignment Accountability System (CalSAAS) provided by the Commission on Teacher Credentialing. For information on the CalSAAS, visit the CALPADS web page at <https://www.cde.ca.gov/ds/sp/cl/calpadsup-dflash201.asp>.

For more information on the definitions listed above, refer to the Updated Teacher Equity Definitions web page at <https://www.cde.ca.gov/pd/ee/teacherequitydefinitions.asp>.



Academic Counselors and School Support Staff

This table displays information about academic counselors and support staff at the school and their full-time equivalent (FTE).

Ratio of Pupils to Academic Counselors and School Support Staff Data	
2022-23 School Year	
	Ratio
Pupils to Academic counselors	◇
Support Staff	FTE
Counselor (academic, social/behavioral or career development)	0.000
Library media teacher (librarian)	■
Library media services staff (paraprofessional)	0.725
Psychologist	0.300★
Social worker	0.200★
Nurse	■
Speech/language/hearing specialist	0.200★
Resource specialist (nonteaching)	0.600★

◇ Not applicable.
 ■ On-call from TCOE.
 ★ Contracted with TCOE.
 ★ Provided by TCOE SELPA.



Financial Data

The financial data displayed in this SARC is from the 2021-22 fiscal year. The most current fiscal information available provided by the state is always two years behind the current school year and one year behind most other data included in this report. For detailed information on school expenditures for all districts in California, see the California Department of Education (CDE) Current Expense of Education & Per-pupil Spending web page at www.cde.ca.gov/ds/fd/ec. For information on teacher salaries for all districts in California, see the CDE Certificated Salaries & Benefits web page at www.cde.ca.gov/ds/fd/cs. To look up expenditures and salaries for a specific school district, see the Ed-Data website at www.ed-data.org.

District Financial Data

This table displays district teacher and administrative salary information and compares the figures to the state averages for districts of the same type and size based on the salary schedule. Note: The district salary data does not include benefits.

Salary Data	2021-22 Fiscal Year	
	Buena Vista SD	Similar Sized District
Beginning teacher salary	\$48,755	\$48,480
Midrange teacher salary	\$68,887	\$73,129
Highest teacher salary	\$81,884	\$99,406
Average elementary school principal salary	⊕	\$117,381
Superintendent salary	\$113,445	\$138,991
Teacher salaries: percentage of budget	32.83%	29.34%
Administrative salaries: percentage of budget	4.52%	5.99%

Financial Data Comparison

This table displays the school's per-pupil expenditures from unrestricted sources and the school's average teacher salary and compares it to the district and state data.

Financial Data Comparison	2021-22 Fiscal Year	
	Expenditures Per Pupil From Unrestricted Sources	Annual Average Teacher Salary
Buena Vista ES	\$11,366	\$74,010
Buena Vista SD	\$11,366	\$74,010
California	\$7,607	\$75,753
School and district: percentage difference	◆	◆
School and California: percentage difference	+49.4%	-2.3%

- ⊕ The principal and superintendent are combined as one position.
- ◆ The percentage difference does not apply to single-site districts.

School Financial Data

The following table displays the school's average teacher salary and a breakdown of the school's expenditures per pupil from unrestricted and restricted sources.

School Financial Data	
2021-22 Fiscal Year	
Total expenditures per pupil	\$14,118
Expenditures per pupil from restricted sources	\$11,366
Expenditures per pupil from unrestricted sources	\$2,752
Annual average teacher salary	\$74,010



Expenditures Per Pupil

Supplemental/restricted expenditures come from money whose use is controlled by law or by a donor. Money that is designated for specific purposes by the district or governing board is not considered restricted. Basic/unrestricted expenditures are from money whose use, except for general guidelines, is not controlled by law or by a donor.

Data for this year's SARC was provided by the California Department of Education and school and district offices. For additional information on California schools and districts and comparisons of the school to the district, the county and the state, please visit DataQuest at <http://dq.cde.ca.gov/dataquest>. DataQuest is an online resource that provides reports for accountability, test data, enrollment, graduates, dropouts, course enrollments, staffing and data regarding English learners. Per Education Code Section 35256, each school district shall make hard copies of its annually updated report card available, upon request, on or before February 1. All data accurate as of January 2024.